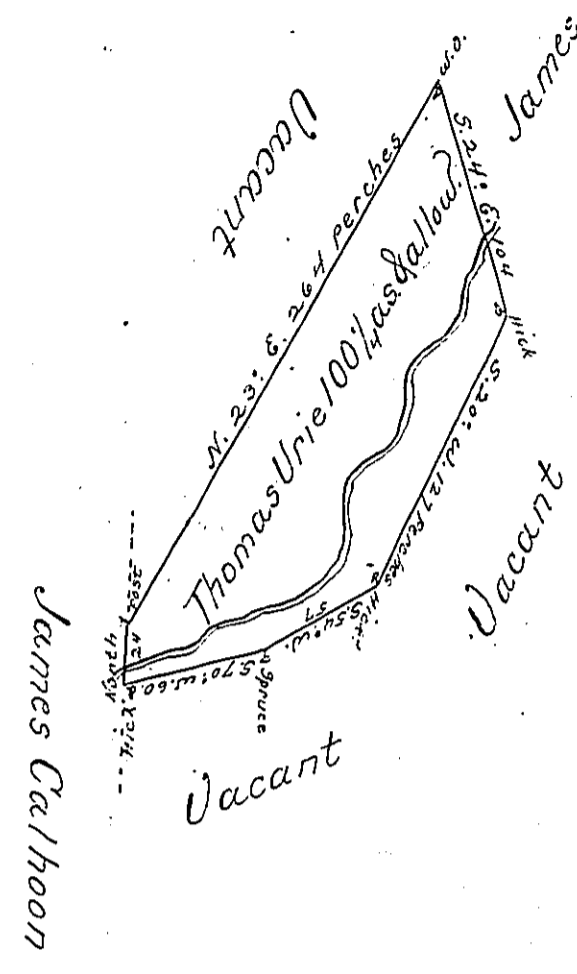


(2)
See D 56-168
James Thompson



In Pursuance of an Order No. 2411 dated the 3d. day of April 1769 Surveyed on the 30th day of October 1769 for Thomas Urie the above described Tract of Land situate on Long Run in the County of Cumberland containing One hundred acres and a quarter of an acre & the allowance of six acres plus for Roads &c.

Wm. Thompson Dy. Sr.
To John Lukens Esqr. }
Surveyor General }

IN TESTIMONY that the above is a copy of the original remaining on file in the Department of Internal Affairs of Pennsylvania, made conformably to an Act of Assembly approved the 16th day of February, 1833, I have hereunto set my Hand and caused the Seal of said Department to be affixed at Harrisburg, this fifth day of March 1901

James W. Pitta
Secretary of Internal Affairs.